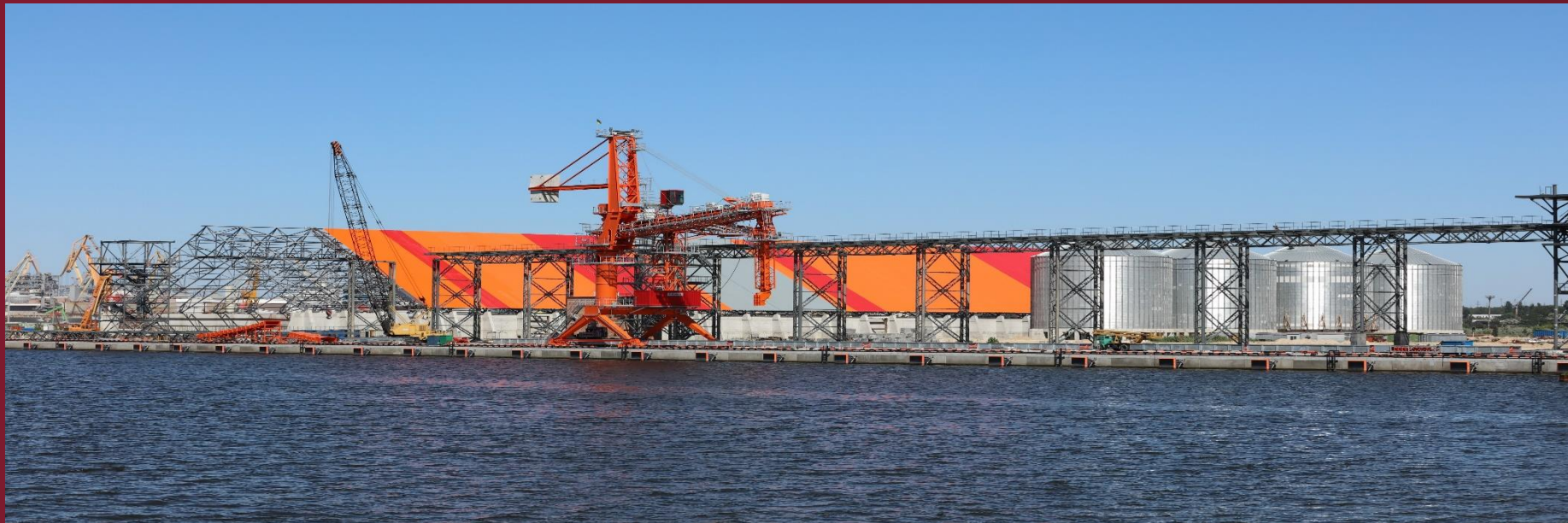


EVT

MARITIME CARGO HANDLING COMPLEX

Mykolaiv, Ukraine



2018



EVT Terminals- proximity of transport and railway networks as well as industrial zone



Sea access: 61 km to the Black sea through the channel

Inland access: roadway, railway

Total land area: 97,8 ha *

Total water area: 69 ha

Quay depth: 11.5-12.8 m

Total quay length: 2000 m, 6 mainliner berths

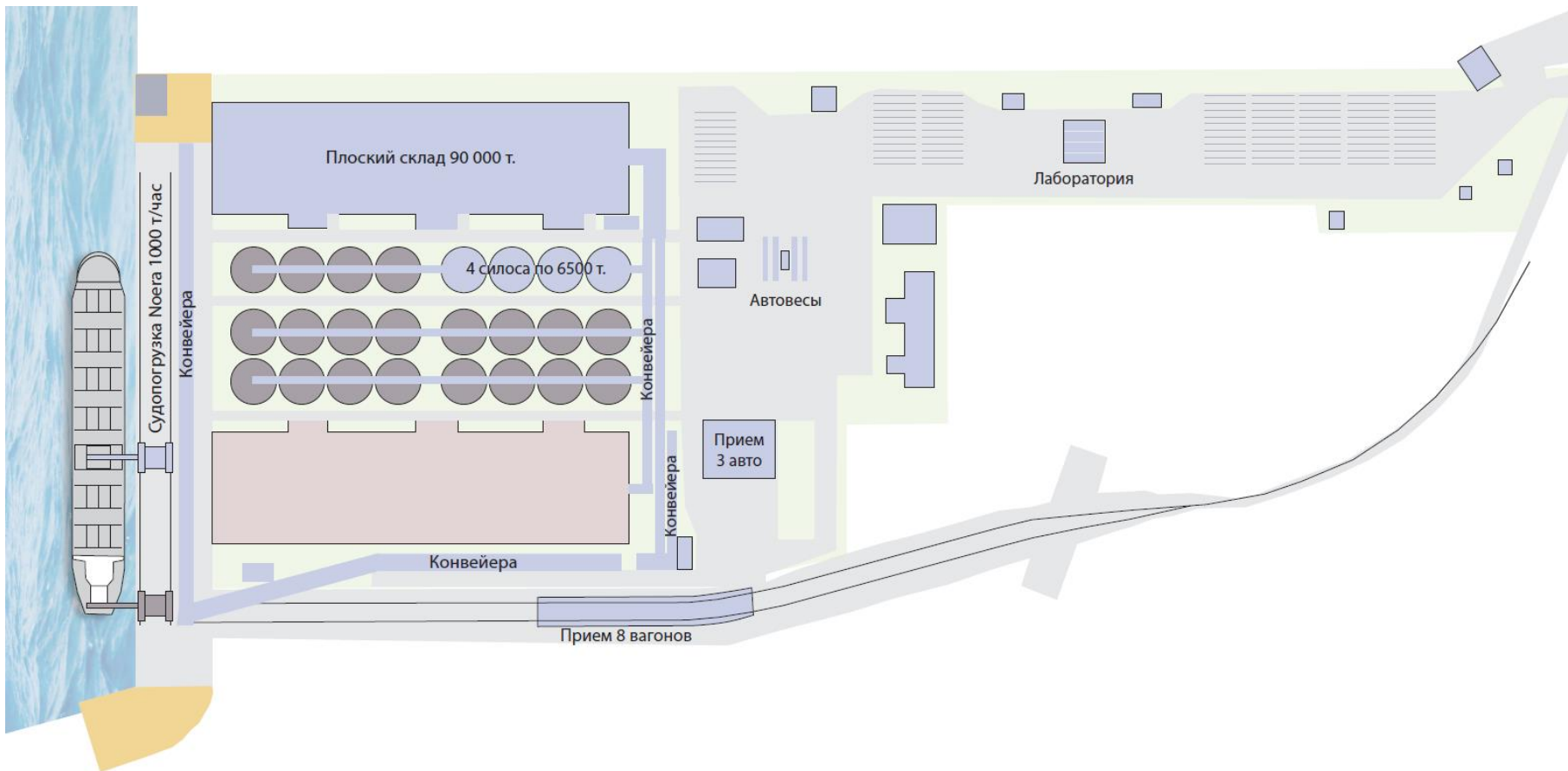


- **LAND OWNERSHIP** - Formalized land property rights: 97,8 ha in private ownership and 69 ha under shipping basin leased for 49 years
- **UTILITIES:** received specifications to connect to city water, sewage and gas supply, and a right to 20 MW power supply





POSSIBLE SPLIT OF THE TERRITORY FOR FURTHER DEVELOPMENT

- EVT invites ideas and investors regarding development of available land plots



Объекты первой очереди обозначены текстом и  цветом

Объекты второй очереди обозначены  цветом

Объекты третьей очереди обозначены  цветом



- Operating railway cargo station and auto-road is right by the project territory



WAGON UNLOADING STATION

Allows to unload:

200 wagons a day =

4 mln. tonn a year



TRUCK UNLOADING STATION

Allows to unload

300 trucks a day

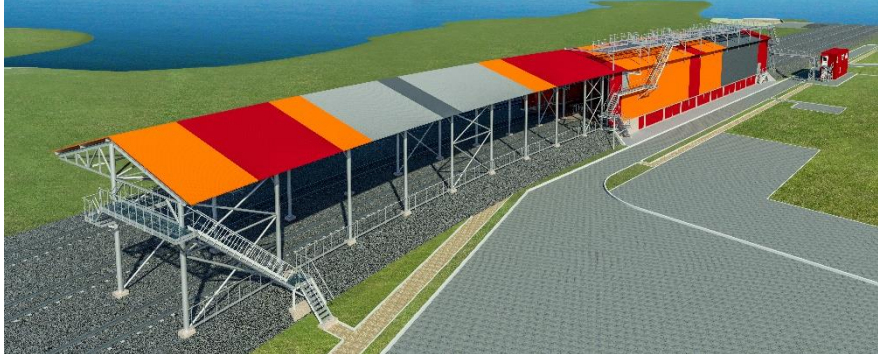


FLAT STORAGE AND SILOS TOTAL STORAGE CAPACITY – 336 000 t.

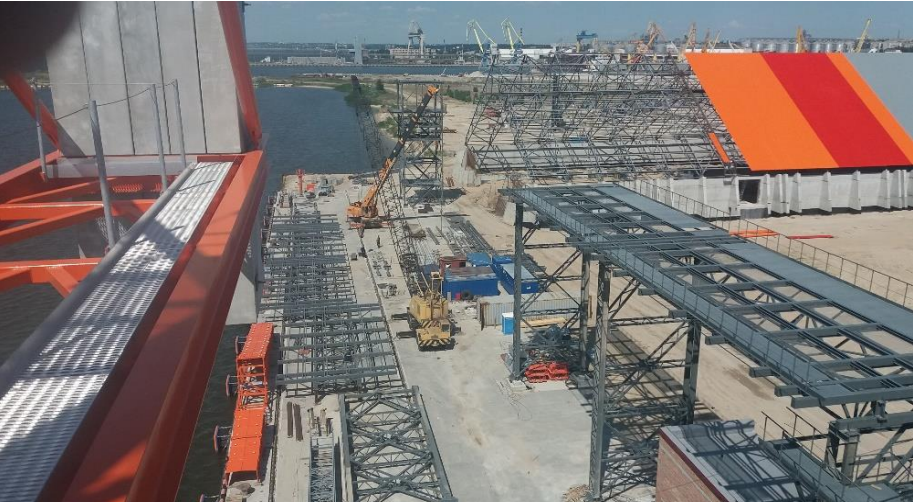
EVT



GRAIN TERMINAL TO START OPERATIONS IN III Q 2018



GRAIN TERMINAL TO START OPERATIONS IN III Q 2018

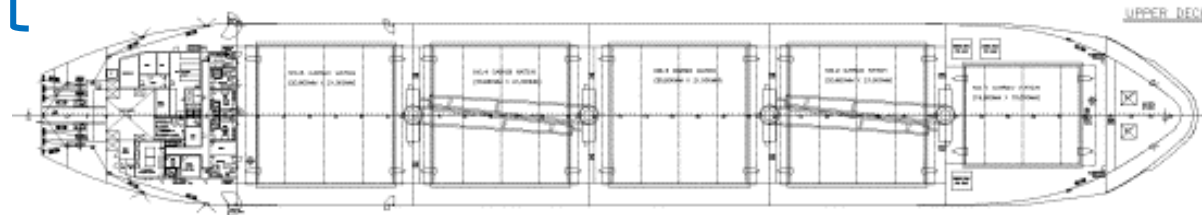
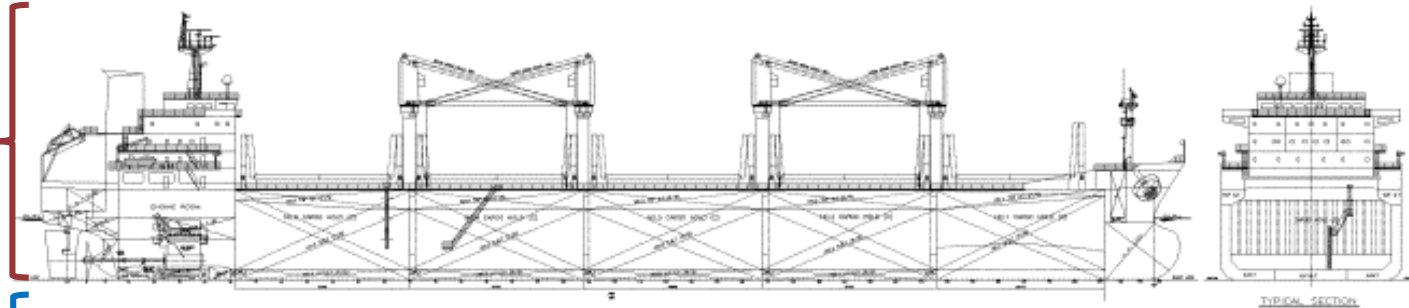


NEW CONSTRUCTED BERTH – 280 M, DEPTH – 12 M

LENGTH OF VESSEL 215 M

BOARD HEIGHT
16 M

DRAFT
10,3 M



EVT



ООО «EVT»

Ул. Мореходная 14-407,
Николаев,
Украина

Сергей Гунько
Директор

Телефон: +380 (67) 466 9358
Эл. почта: sergey.gunko@evt-port.com



UAB «BT Invest»
Gedimino ave 35,
Vilnius,
LT-01109, Lithuania

Aivaras Karalius
CEO

Phone: +370 (682) 44 373
E-mail: aivaras.karalius@btinvest.lt

